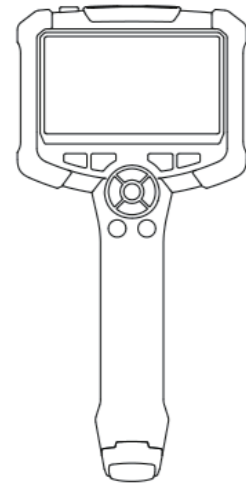


# Handheld Single Lens Industrial Borescope

## User Manual



**UT665P**  
**UT665P-5m**  
**UT665P-10m**

Please read the User Manual carefully before your using!

### PREFACE

Thank you for purchasing the new Handheld Single Lens Industrial. In order to use this product safely and correctly, please read this manual thoroughly.  
After reading this manual, it is recommended to keep the manual at an easily accessible place, preferably close to the device, for future reference.

### LIMITED WARRANTY AND LIABILITY

Uni-Trend guarantees that the product is free from any defect in material and workmanship within one year from the purchase date. This warranty does not apply to damages caused by accident, negligence, misuse, modification, contamination and improper handling. The dealer shall not be entitled to give any other warranty on behalf of Uni-Trend. If you need warranty service within the warranty period, please contact authorized service center or send the product back with problem description.  
This warranty is the only compensation you can obtain. Uni-Trend will not be responsible for any special, indirect, incidental or subsequent damage or loss caused by any reason or speculation. As some areas or countries do not allow limitations on implied warranties and incidental or subsequent damage, the above limitation of liability and stipulation may not apply to you.

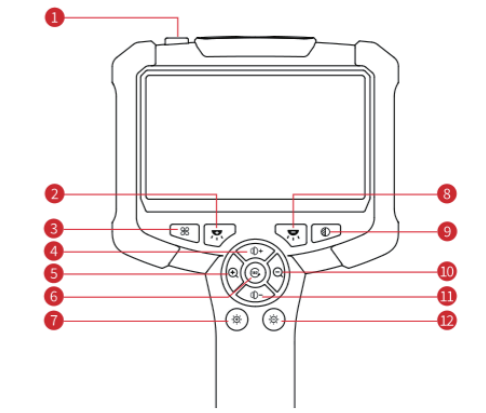
### Safety & Maintenance

- Do not hit the Lens violently. Do not pull the cables so hard.
- Be careful to use the device in somewhere rough and uneven, and avoid scratching the waterproof layer of probe.
- The Lens probe is not made from heat-resistant materials, so please cool down the temperature of engine to be normal when inspect it.
- Keep the Lens and device clean and dry when not using, to avoid contacting any oil contaminations or other corrosives.
- The product is not suitable for users who are limited in body health, sensory ability or spirit ability.
- Do not let children contact and operate the device.
- Do not disassemble the device randomly and contact sellers for maintenance service if any damaged.
- The product is for industrial borescope use, and not suitable for medical use or body check.

### Battery

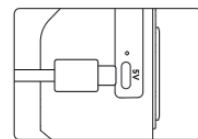
- Please charge the device via the home charger meets safety requirements (5V=1A).
- The device is supported to be used in the charging process.
- When the device is not used for a long time, charge it at least once every three months, to avoid unrecoverable damage caused by over-discharge.

### Functions



1	POWER Button (Long press 2-3s to power on/off)
2	Increase Screen Brightness (10-25-50-75-100%, increasing)
3	Restore the Factory Settings (Reset the settings to the original state)
4	Contrast Increase (Lessen-Normal-Enhance) (Increasing)
5	Zoom In (1.0-1.5-2.0x, increasing)
6	Rotate Images/Switch Lens (180° image rotation, Dual-Lens: long press to switch front/side Lens.)
7	Turn Light Up (0-60-80-100%, increasing)
8	Decrease Screen Brightness (100-75-50-25-10%, decreasing)
9	Black-White Mode (Color and Black-White, In Cycle)
10	Zoom Out (2.0-1.5-1.0x, decreasing)
11	Contrast Decrease (Enhance-Normal-Lessen) (decreasing)
12	Turn Light Down (100-80-60-0%) (decreasing)

### Charging Guideline



- Charge the device via the Type-C adapter (5V=1A), and fast charge is not supported.
- During the charging, LED lights up in solid red.
- When it is fully charged, LED lights up in solid green. (Please charge the device via the Type-C cable.)

### FAQ

- The image output is freezing up

Check the battery status of device, or restart the device.

- Unclear imaging

The optimum imaging focus is 2cm-10cm, please align the device with the target, or use a clean alcohol cloth to wipe the front-end of Lens.

- Charge

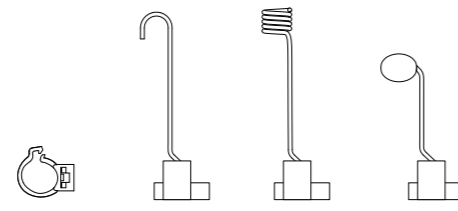
Please charge the device via the charger (5V=1A), and fast charge is not supported.

- Lens overheated

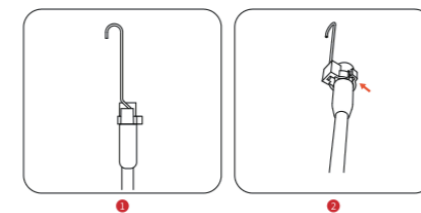
The Lens overheat phenomenon is commonly seen, especially in the highest LED brightness of Lens, but without affecting the normal use or service life.

### Accessory Installation Guideline

Accessories: Fixed Buckle \*3, Hook\*1, Magnet\*1, Side Mirror\*1



#### Installation Diagram



### Specification

Models	UT665P	UT665P-5m	UT665P -10m
System	Screen Size 4.3"		
	System Languages English		
	Screen Pixels 1280*720		
	Basic Functions Screen rotation, Contrast adjustment, Black-white images, Color conversion, Image zoom-in and zoom-out, Screen brightness adjustment.		
Hose	Hose Material The hardwire with aviation plug can be changed		
	Hose Length	1m	5m 10m
Lens	Lens Diameter	8mm	
	Light Sensor Chip	CMOS	
	Field of View (FOV)	70°	
	Depth of Field (DOF)	20~100mm	
	Adjustable LED Lights	4-Setting, 8 LEDs	
	Pixels	300K	
	IP Rating	IP67	
Battery	Battery	3.7V/2000mAh	
	Battery Life	6h	
Working	Lens Temperature	0°C~80°C	
Conditions	Working Temperature	0°C~45°C	
	Humidity	<90%RH, No condensation	
Accessories List: Handheld Single Lens Industrial Borescope*1, Type-C Cable*1, Gift Box*1, User Manual*1, Blister Tray*1, Hook*1, Side Mirror*1, Magnet*1, Fixed Buckle*3.			

The manual is subject to change without prior notice!  
Due to different batches, the materials and details of actual products may be slightly different from the graphic information, please refer to the actual product received. Experimental data provided in the page is from internal laboratory of UNI-T, but it should not be a reference for customer to place orders. Any questions, please contact the customer service, thanks!



**UNI-T**  
**UNI-TREND TECHNOLOGY (CHINA) CO., LTD.**  
No.6, Gong Ye Bei 1st Road,  
Songshan Lake National High-Tech Industrial  
Development Zone, Dongguan City,  
Guangdong Province, China  
Tel: (86-769) 8572 3888  
<http://www.uni-trend.com>  
P/N:110401113046X